



MORNING MANTRA

WHAT'S RISING

BULLS

BEARS

WHAT'S FALLING

Daily Derivatives & Market Report

Aug 08, 2025



Indian equity benchmarks witnessed heavy selling pressure on Friday, with both the Nifty and Sensex closing around 1% cut due to broader-based selling. Markets made a slightly negative start and extended their losses to trade near day's low points, as U.S. President Donald Trump ruled out trade talks with India and Prime Minister Modi said he will never compromise on farmers' interests.

Some of the important factors in today's trade:

Organic Chemicals, Apparel, Jewellery, Shrimp exports may dip 50-70% due to trump tariff: Some concerns also came as think tank GTRI said the imposition of a 50 per cent US tariff on Indian goods will impact exports of nine product categories, including shrimp, organic chemicals, apparel, and jewellery by 50-70 per cent.

India's GDP to slow down by 6% in FY26: Moody's Ratings said that India's GDP growth is likely to slow down by about 30 basis points to 6 per cent in the current fiscal if the US implements 50 per cent tariffs from August 27.

Ongoing foreign fund outflows: Foreign Institutional Investors (FIIs) offloaded equities worth Rs 4,997.19 crore on Thursday, according to exchange data.

Global front: European markets were trading mostly in red, after the Trump administration's higher tariff rates on trading partners took effect from midnight and Moscow confirmed Russian President Vladimir Putin and U.S. President Donald Trump are preparing to meet in the coming days. Asian markets ended mixed as uncertainty continues over US reciprocal tariffs.

MARKET SELFIE



MARKET SUMMARY

Domestic Indices	Close	Points	% Change
SENSEX	79857.79	-756.47	-0.95
NIFTY	24363.30	-232.85	-0.95
MIDCAP	44570.89	-708.18	-1.56
SMLCAP	51596.97	-539.36	-1.03
BSEFMC	20200.25	-150.35	-0.74
HEALTHCARE	43160.95	-483.38	-1.11
AUTO	52473.08	-742.69	-1.40
POWER	6573.23	-56.83	-0.86
REALTY	6791.68	-144.70	-2.09
BSE IT	33816.41	-337.16	-0.99
BANKEX	61127.28	-643.20	-1.04
OIL GAS	26029.19	-27.87	-0.11
METAL	30461.00	-563.54	-1.82
INDIA VIX	12.03	0.34	2.95

ADVANCE - DECLINE

Index	Advance	Decline	Unchanged
NSE	983	1966	88
BSE	1503	2548	122

MARKET TURNOVER (₹ in Crs)

Segment	Current	Previous	Net %
BSE CASH	15524	11918	30
NSE CASH	100445	98041	2
NSE F&O	142271	178838	(20)

KEY INDICES RATIOS

INDEX	P/E	P/B	Dividend Yield
NIFTY	21.48	3.32	1.37
SENSEX	22.35	4.25	1.19

KEY NUMBERS TRACKER



FII – DII ACTIVITY IN CASH SEGMENT (₹ in Crs)

FII-DII*	Buy	Sell	Net
DII	15970	8533	7437
FII	16996	15146	1851

Note: FPI & DII Figures are provisional

FII ACTIVITY IN DERIVATIVES SEGMENT (₹ in Crs)

FII	Buy	Sell	Net
Ind. Futures	2285.10	4047.44	(1762)
Ind. Options	863054.41	863202.82	(148)
Stk. Futures	18363.58	21088.96	(2725)
Stk. Options	20112.87	19758.56	354

PUT-CALL RATIO

Index	Current	Previous
NIFTY	0.53	0.92
BANK NIFTY	0.76	0.84

DOLLAR INDEX

Dollar Index	Current	Previous	% Change
DXY	98.27	98.40	-0.14

10-YEARS G-SEC YIELD

Country	Current	Previous	% Change
INDIA	6.399	6.385	0.14
USA	4.283	4.226	0.92

KEY COMMODITIES TRACKER (in \$)

Commodity	Current	Change Points	% Change
Gold	3398.58	-1.66	-0.05
Silver	38.32	0.01	0.02
Crude-Oil	63.34	-0.47	-0.73
Brent-Crude	66.11	-0.22	-0.33

CURRENCY FUTURES & INDEX TRENDS TRACKER



CURRENCY FUTURES				
Expiry		Close	Change Points	% Change
26 AUG-25	USD-INR	87.70	0.13	0.14
26 AUG-25	EUR-INR	102.17	-0.01	-0.01
26 AUG-25	GBP-INR	117.91	0.38	0.33
26 AUG-25	JPY- INR	59.41	-0.22	-0.36

INDICES – SUPPORT-RESISTANCE-PIVOT LEVELS						
Index	Close	S2	S1	Pivot	R1	R2
NIFTY	24363	24181	24272	24429	24520	24677
SENSEX	79858	79287	79572	80061	80347	80836
NIFTY FUTURES	24441	24235	24338	24516	24619	24797
BANK NIFTY	55005	54441	54723	55188	55470	55935
CNX IT	34399	34171	34285	34464	34578	34757
CNX MIDCAP	56002	55162	55582	56339	56759	57517
CNX SMALLCAP	17428	17167	17297	17511	17641	17855
INDIA VIX	12.03	10.41	11.22	11.71	12.52	13.01

INDEX TREND ANALYSIS			
Index	Daily	Weekly	Monthly
NIFTY	Sell	Neutral	Neutral
SENSEX	Sell	Neutral	Neutral
NIFTY FUTURES	Sell	Neutral	Neutral
BANK NIFTY	Sell	Neutral	Buy
CNX IT	Sell	Sell	Neutral
CNX MIDCAP	Sell	Neutral	Neutral
CNX SMALLCAP	Sell	Neutral	Neutral
INDIA VIX	Neutral	Sell	Sell

SECURITIES BAN IN F&O TRADES FOR 11-08-2025
RBLBANK, PNBHOUSING

TECHNICAL VIEWS



NIFTY

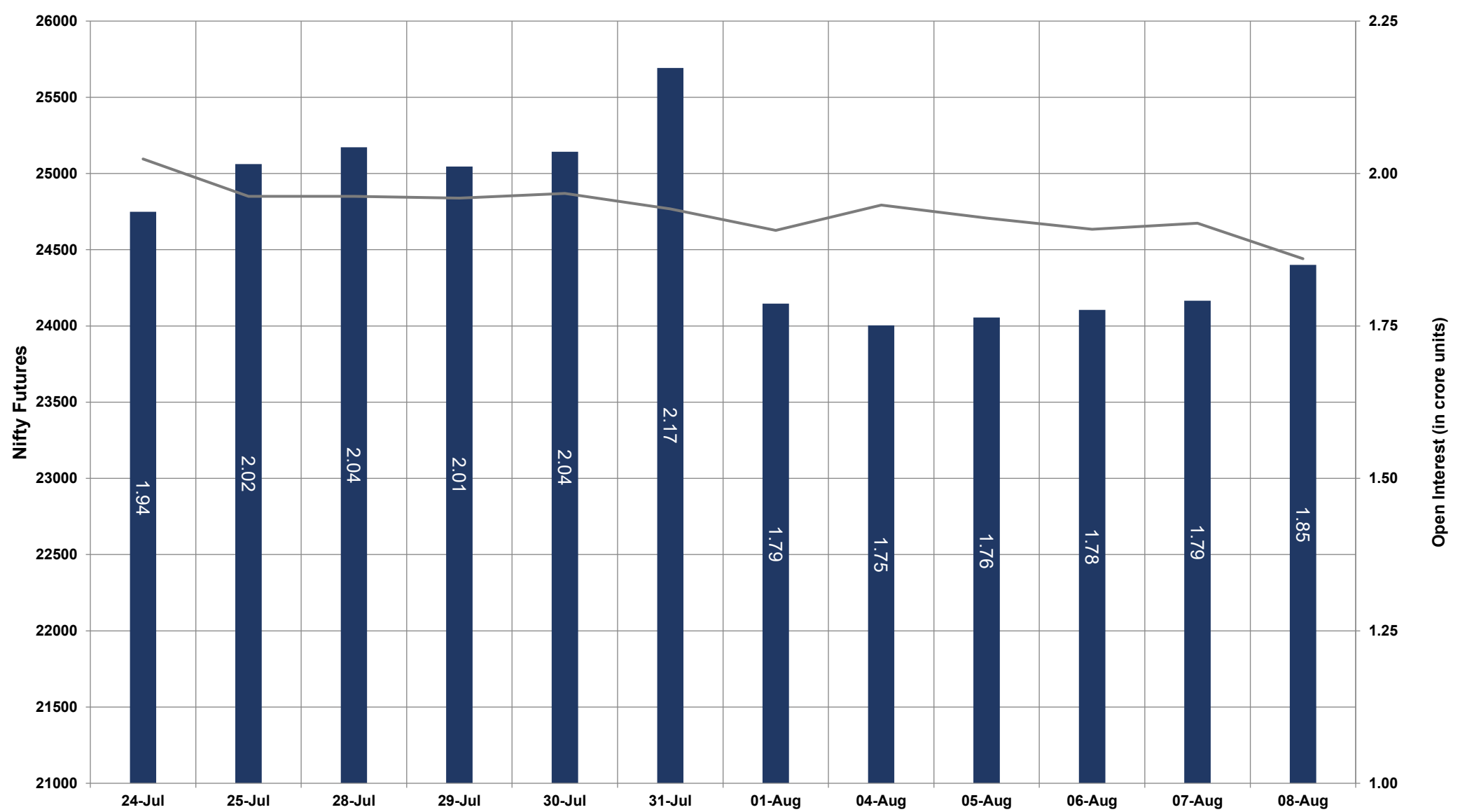


- Nifty Cash = **24363.30 (-0.95%)**
- Resistance levels = **24475** and **24540**
- Support levels = **24250** and **24190**

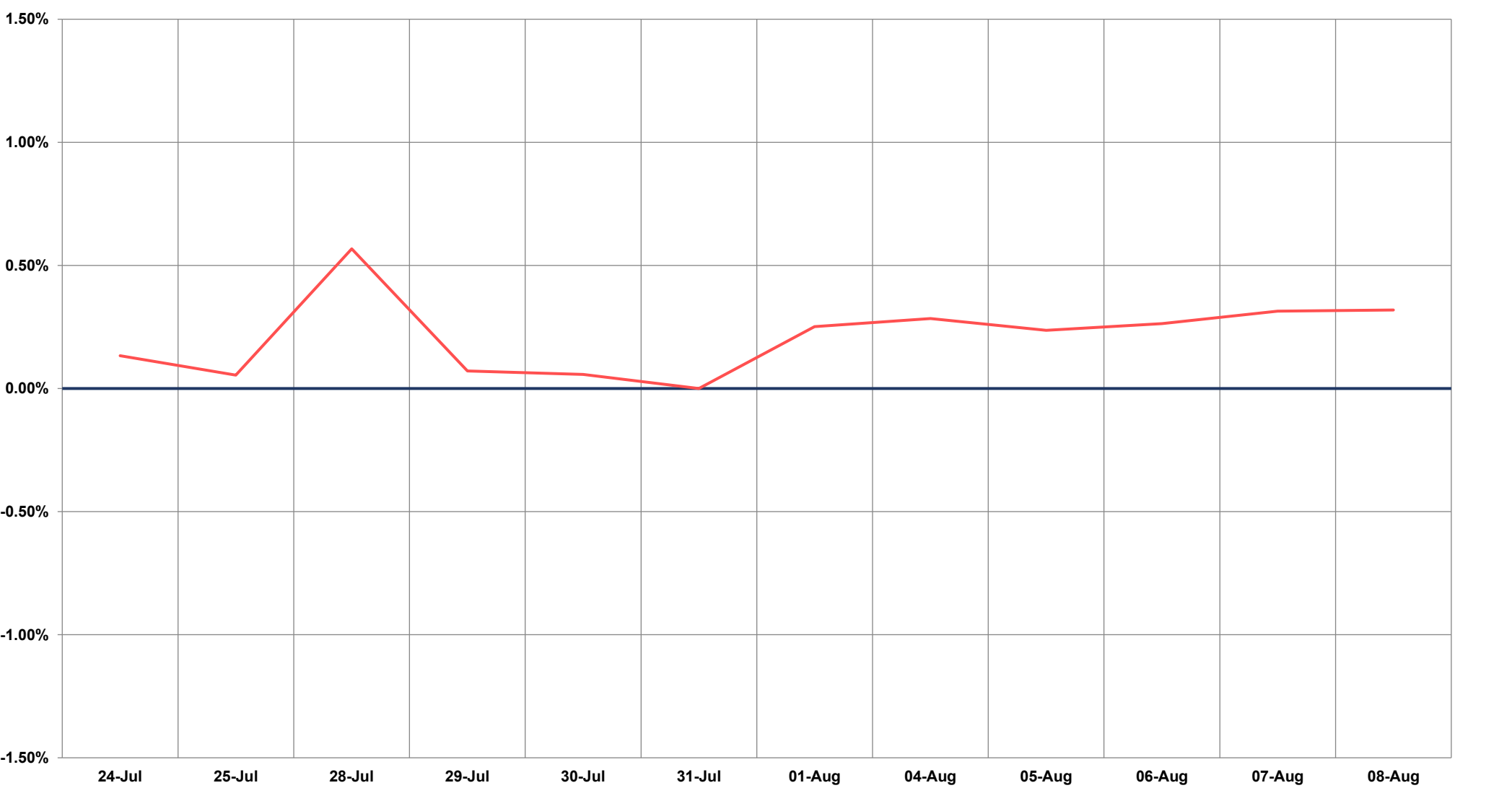
TECHNICAL VIEWS



NIFTY FUTURES



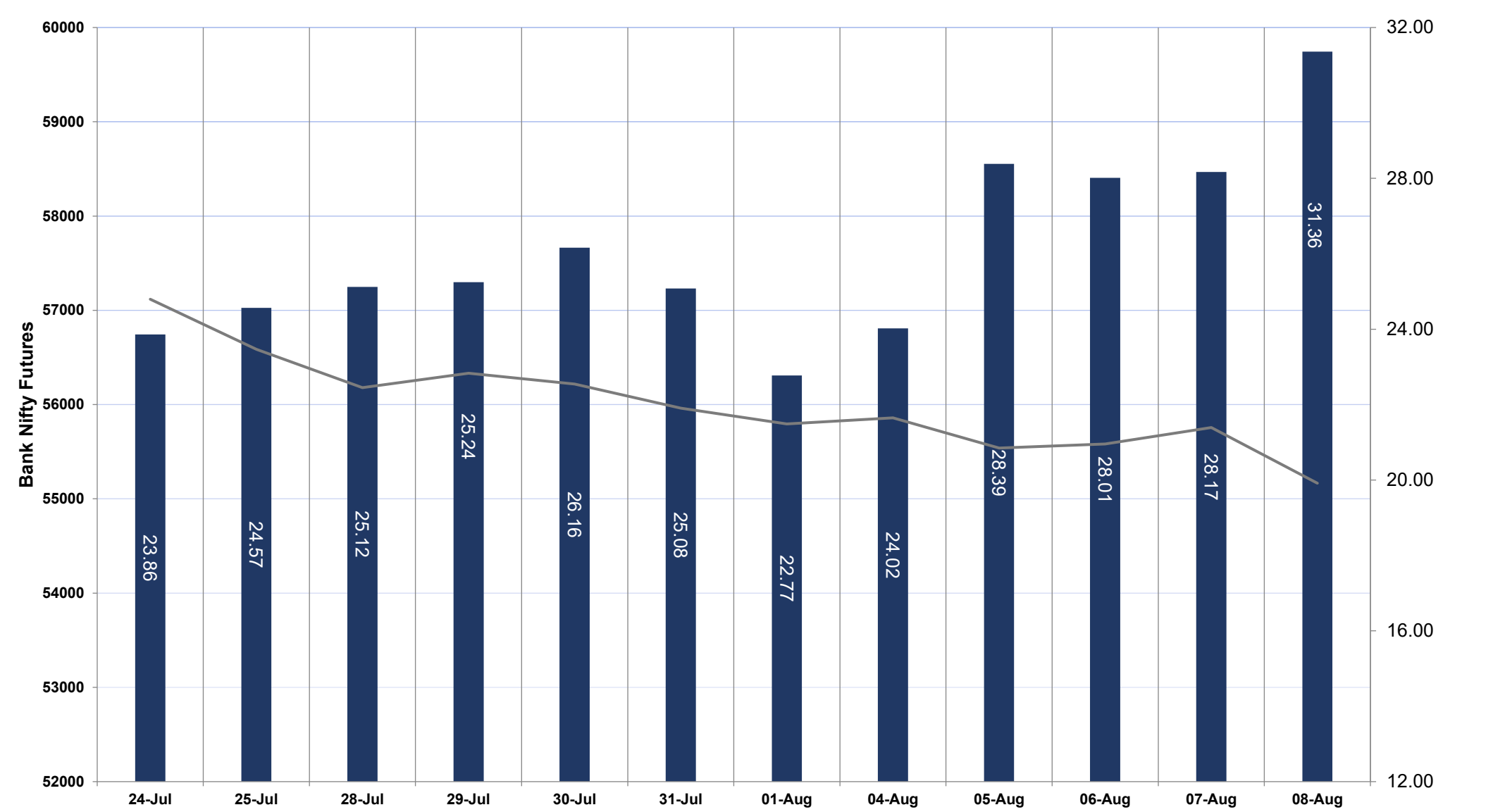
SPREAD: FUTURE & SPOT



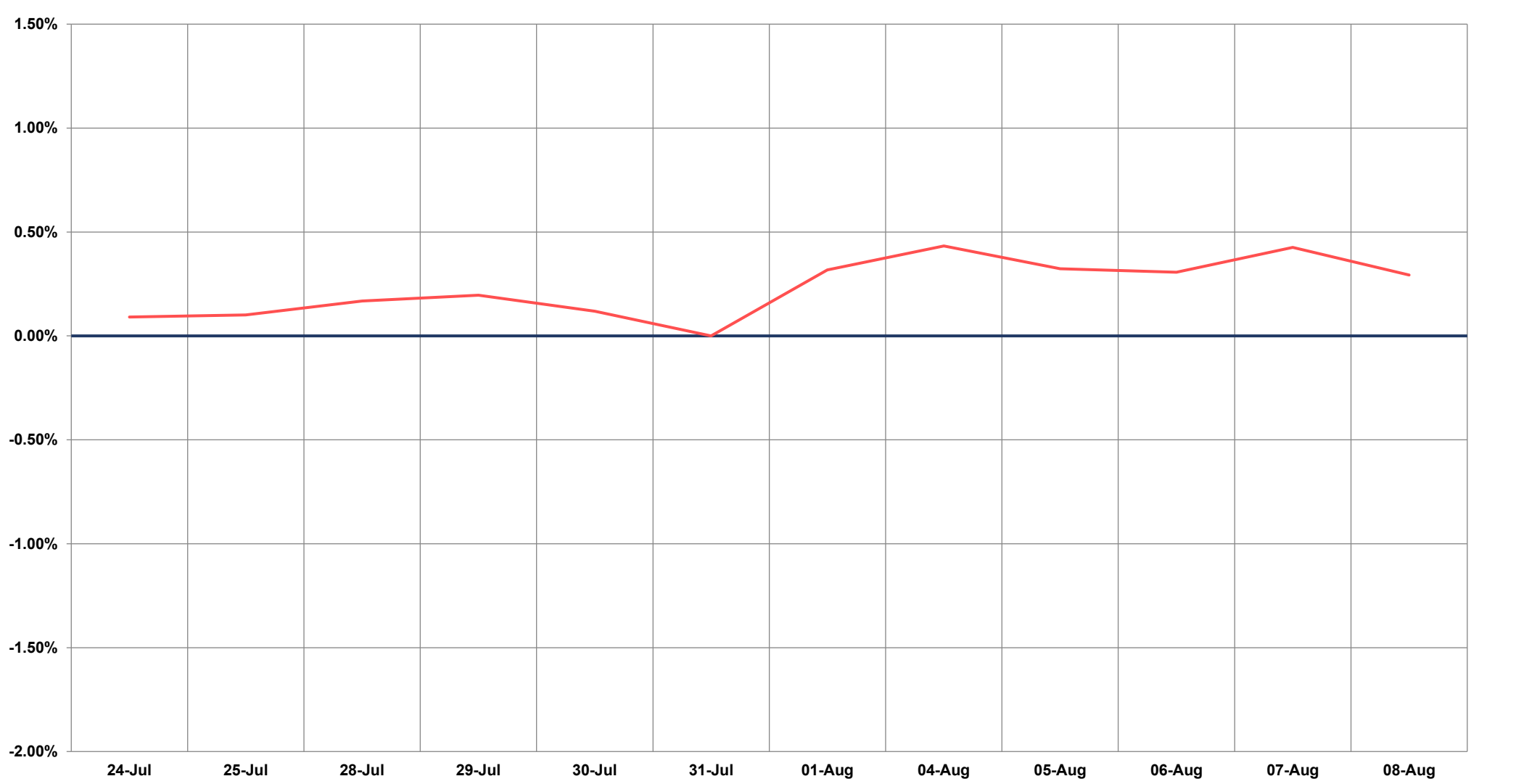
TECHNICAL VIEWS



BANK NIFTY FUTURES



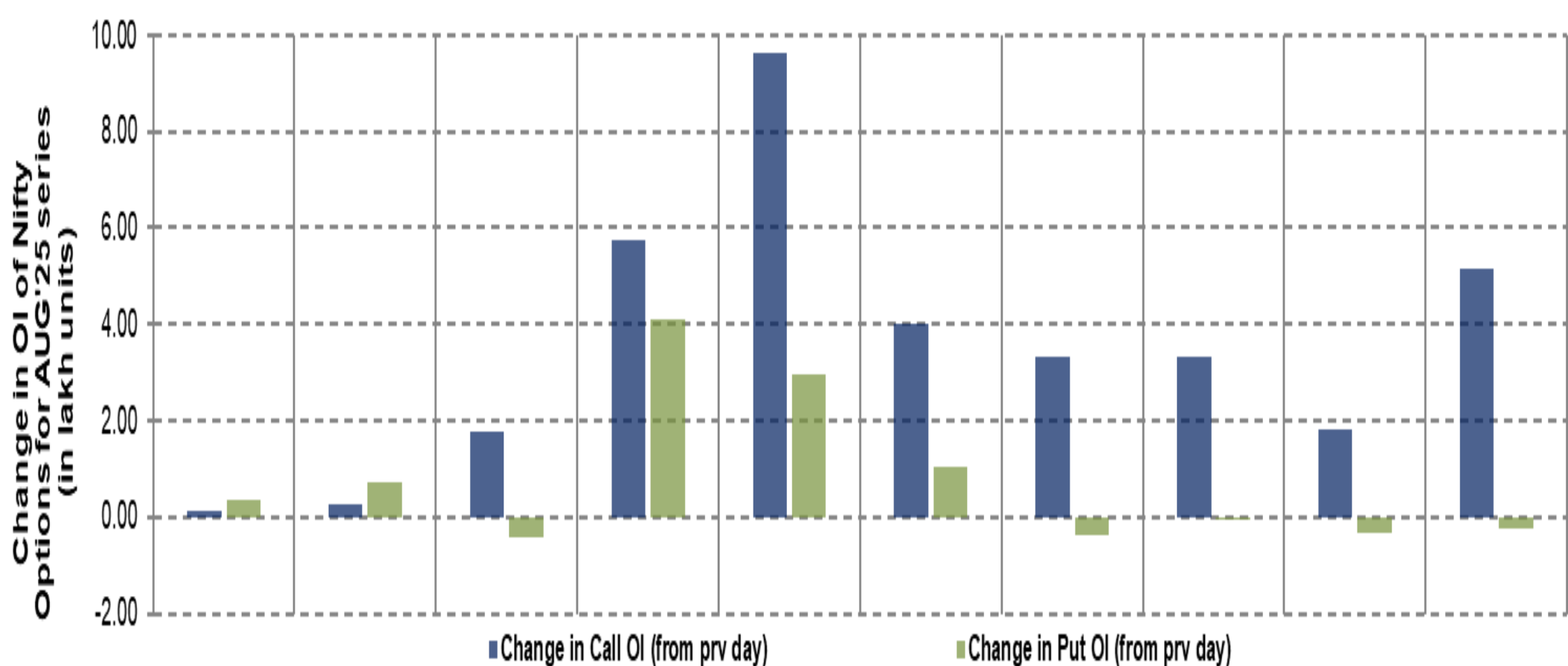
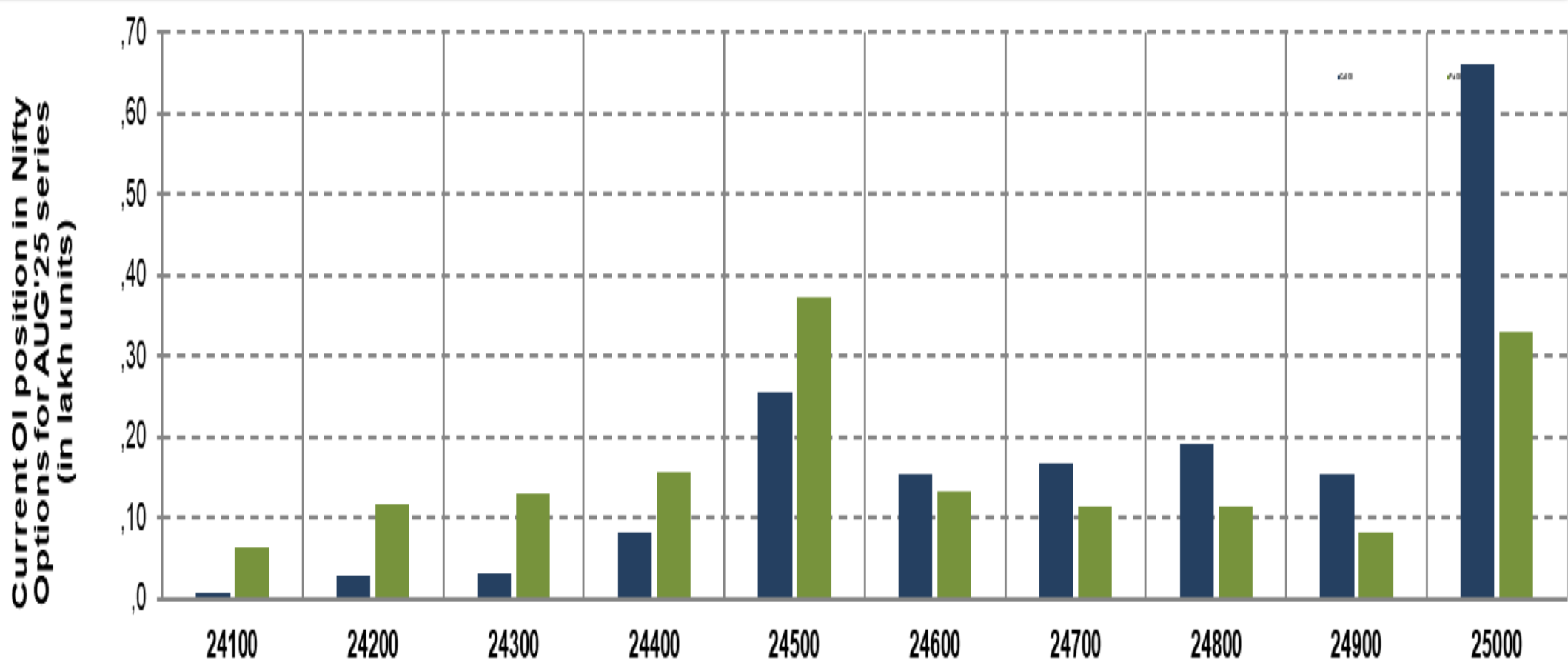
SPREAD: FUTURE & SPOT



TECHNICAL VIEWS



NIFTY OPTIONS



- **Most Active Nifty Call** with an addition of 0.97 million in Open Interests is **Strike Price of 24500**
- **Most Active Nifty Put** with an addition of 0.30 millions in Open Interests is **Strike Price of 24500**
- **Maximum Open Interest an outstanding** was 6.60 millions for Calls at **Strike Price of 25000**
- **Maximum Open Interest an outstanding** was 3.73 millions for puts at **Strike Price of 24500**

Disclaimer



The Information provided by SMS or in newsletter or in any document has been prepared by Shah Investor's Home Ltd (SIHL). The Information provided by SMS or in newsletter does not constitute an offer or solicitation for the purchase or sale of any financial instrument or as an official confirmation of any transaction. The information contained herein is from publicly available data or other sources believed to be reliable, but we do not represent that it is accurate or complete and it should not be relied on as such. SIHL or any of its affiliates/ group companies shall not be in any way responsible for any loss or damage that may arise to any person from any error in the information contained in this report or SMS. This Information provided by SMS, reports or in newsletter is provided for assistance only and is not intended to be and must not alone be taken as the basis for an investment decision. The user assumes the entire risk of any use made of this information. Each recipient of this Information provided by SMS, report or in newsletter should make such investigation as it deems necessary to arrive at an independent evaluation of an investment in the securities of companies referred to in this information provided by SMS, report or in newsletter (including the merits and risks involved), and should consult his own advisors to determine the merits and risks of such investment. The investment discussed or views expressed may not be suitable for all investors. This information is strictly confidential and is being furnished to you solely for your information.

The information should not be reproduced or redistributed or passed on directly or indirectly in any form to any other person or published, copied, in whole or in part, for any purpose. The information provided by report or SMS is not directed or intended for distribution to, or use by, any person or entity who is a citizen or resident of or located in any locality, state, country or other jurisdiction, where such distribution, publication, availability or use would be contrary to law, regulation or which would subject SIHL and affiliates/ group companies to any registration or licensing requirements within such jurisdiction. The distribution of this Information provided by SMS or in newsletter in certain jurisdictions may be restricted by law, and persons in whose possession this Information provided by SMS or in newsletter comes, should inform themselves about and observe, any such restrictions. The information given or Information provided by SMS, report or in newsletter is as of the date of the issue date of report or the date on which SMS provided and there can be no assurance that future results or events will be consistent with this information. This information is subject to change without any prior notice. SIHL reserves the right to make modifications and alterations to this statement as may be required from time to time. However, SIHL is under no obligation to update or keep the information current.

Nevertheless, SIHL is committed to providing independent and transparent recommendation to its client and would be happy to provide any information in response to specific client queries. Neither SIHL nor any of its affiliates, group companies, directors, employees, agents or representatives shall be liable for any damages whether direct, indirect, special or consequential including lost revenue or lost profits that may arise from or in connection with the use of the information. Past performance is not necessarily a guide to future performance. The disclosures of interest statements incorporated in the Information provided by SMS, report or in newsletter are provided solely to enhance the transparency and should not be treated as endorsement of the views expressed in the report. The analyst for this report certifies that all of the views expressed in this report accurately reflect his or her personal views about the subject company or companies and its or their securities, and no part of his or her compensation was, is or will be, directly or indirectly related to specific recommendations or views expressed in this report.